

# EXPLODED VIEW & PARTS LISTING

## Air Operated Double Diaphragm Pump

Model: NDP-25 Stainless-Steel-HP  
High Pressure Pumps



### To Purchase:

☎ [800-990-7867](tel:800-990-7867)

✉ [sales@yamadapump.com](mailto:sales@yamadapump.com)

📍 [Find My Rep](#)

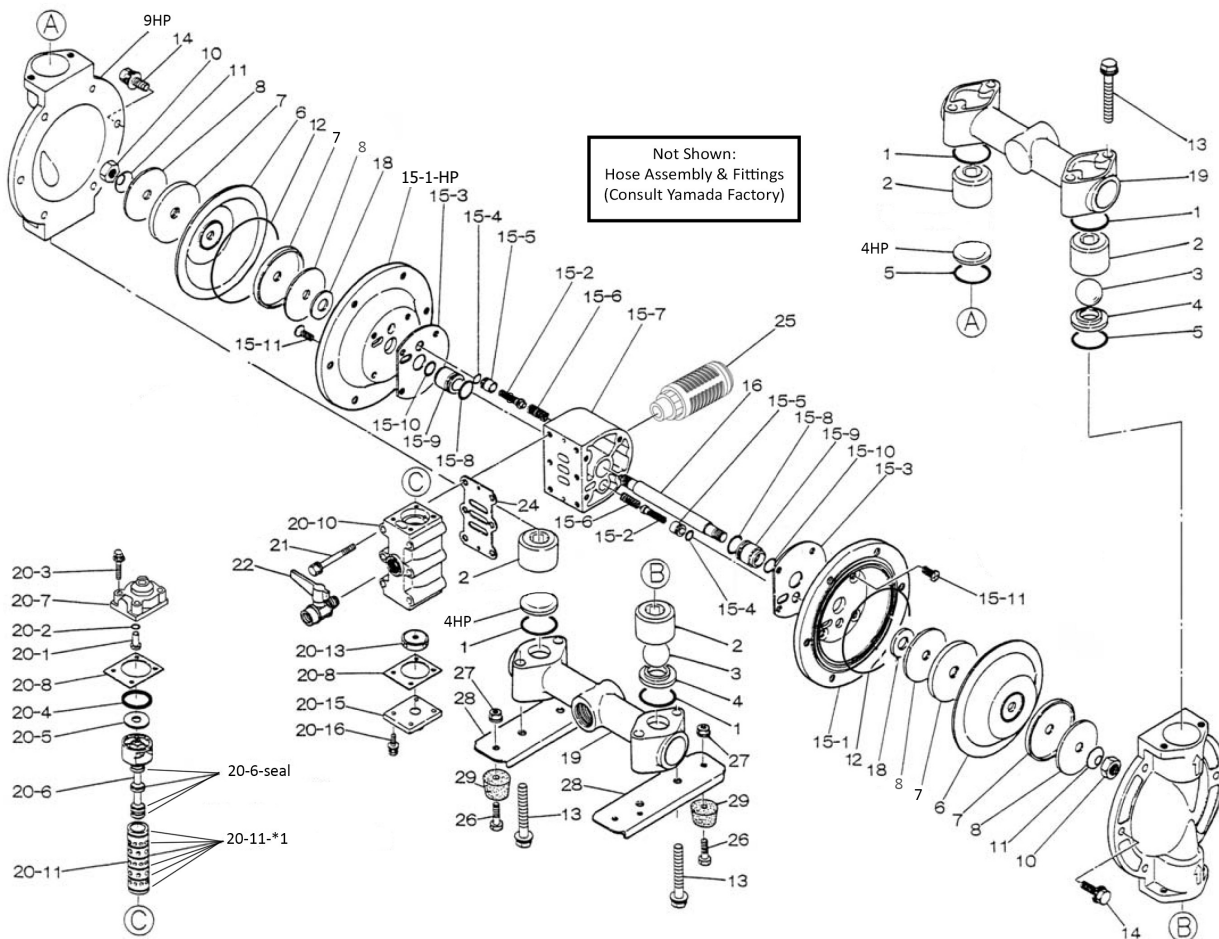
### More Information:

▶ YouTube: [@yamadapump](#)

🌐 [yamadapump.com](http://yamadapump.com)

[Data Sheets](#) | [CAD Drawings](#) | [Manuals](#)  
[Literature](#) | [BOM](#) | [Performance Curves](#)

### Trial Program



Air Operated Double Diaphragm Pump

	NDP-25BSC-HP	NDP-25BSN-HP	NDP-25BSE-HP	NDP-25BSV-HP	NDP-25BSH-HP	NDP-25BSS-HP		
REF No.	PARTS No.	PARTS No.	PARTS No.	PARTS No.	PARTS No.	PARTS No.	DESCRIPTION	QTY.
	851537-HP	851538-HP	851539-HP	851540-HP	852102-HP	852703-HP	Hi-Pressure Pumps	
1	640044	640044	683997	642044	640044	683997	O-RING	4
2	711703	711703	711703	711703	711703	711703	VALVE STOPPER	4
3	770556	770581	770590	770599	773127	770590	BALL	2
4	711707	711707	711707	711707	711707	711707	VALVE SEAT	2
4-HP	711707-HP	711707-HP	711707-HP	711707-HP	711707-HP	711707-HP	VALVE SEAT - HP	2
5	640134	640134	683996	642134	640134	683996	O-RING	2
6	772961	772962	772963	772964	771363	771974	DIAPHRAGM	2
7	716258	716258	716258	716258	716258	716258	CENTER DISK	4
8	716259	716259	716259	716259	716259	716259	PLAIN WASHER	4
9	711964	711964	711964	711964	711964	711964	OUT CHAMBER	1
9-HP	711694-HP	711694-HP	711694-HP	711694-HP	711694-HP	711694-HP	OUT CHAMBER - HP	1
10	682263	682263	682263	682263	682263	682263	NUT	2
11	682730	682730	682730	682730	682730	682730	CONED DISK SPRING	2
12	-	-	-	-	640154	640154	O-RING	2
13	621185	621185	621185	621185	621185	621185	BOLT	8
13	681937	681937	681937	681937	681937	681937	WAVE WASHER	8
14	621177	621177	621177	621177	621177	621177	BOLT	12
14	631937	631937	631937	631937	631937	631937	WAVE WASHER	12
<b>15</b>	<b>803248-HP</b>	<b>803248-HP</b>	<b>803248-HP</b>	<b>803248-HP</b>	<b>803248-HP</b>	<b>803248-HP</b>	<b>CENTER BODY ASSEMBLY</b>	<b>1</b>
15-1	715939	715939	715939	715939	715939	715939	AIR CHAMBER	1
15-1-HP	715939-HP	715939-HP	715939-HP	715939-HP	715939-HP	715939-HP	AIR CHAMBER - HP	1
15-2	802360	802360	802360	802360	802360	802360	PILOT VALVE ASSEMBLY	2
15-3	771057	771057	771057	771057	771057	771057	GASKET	2
15-4	640009	640009	640009	640009	640009	640009	O-RING	2
15-5	771945	771945	771945	771945	771945	771945	VALVE SEAT	2
15-6	708666	708666	708666	708666	708666	708666	SPRING	2
15-7	709812	709812	709812	709812	709812	709812	BODY	1
15-8	685276	685276	685276	685276	685276	685276	O-RING	2
15-9	772703	772703	772703	772703	772703	772703	THROAT BEARING	2
15-10	685414	685414	685414	685414	685414	685414	PACKING	2
15-11	682486	682486	682486	682486	682486	682486	FLAT HEAD BOLT	8
16	709162	709162	709162	709162	709162	709162	CENTER ROD	1
18	771054	771054	771054	771054	771054	771054	CUSHION	2
19	831271	831271	831271	831271	831271	831271	MANIFOLD	2
<b>20</b>	<b>802362</b>	<b>802362</b>	<b>802362</b>	<b>802362</b>	<b>802362</b>	<b>802362</b>	<b>VALVE BODY ASSEMBLY</b>	<b>1</b>
20-1	709161	709161	709161	709161	709161	709161	RESET BUTTON	1
20-2	640005	640005	640005	640005	640005	640005	O-RING	1
20-3	682704	682704	682704	682704	682704	682704	BOLT	4
20-4	771241	771241	771241	771241	771241	771241	PACKING	1
20-5	715961	715961	715961	715961	715961	715961	PLAIN WASHER	1
20-6	802400	802400	802400	802400	802400	802400	C SPOOL VALVE ASSEMBLY	1
20-6-seal	771053	771053	771053	771053	771053	771053	SEAL RING	5
20-7	710221	710221	710221	710221	710221	710221	CAP	1
20-8	771240	771240	771240	771240	771240	771240	GASKET	2
20-10	711639	711639	711639	711639	711639	711639	VALVE BODY	1

Air Operated Double Diaphragm Pump

	NDP-25BSC-HP	NDP-25BSN-HP	NDP-25BSE-HP	NDP-25BSV-HP	NDP-25BSH-HP	NDP-25BSS-HP		
REF No.	PARTS No.	PARTS No.	PARTS No.	PARTS No.	PARTS No.	PARTS No.	DESCRIPTION	QTY.
	851537-HP	851538-HP	851539-HP	851540-HP	852102-HP	852703-HP	Hi-Pressure Pumps	
20-11	803931	803931	803931	803931	803931	803931	SLEEVE ASSEMBLY	1
20-11-*1	771080	771080	771080	771080	771080	771080	O-RING	6
20-13	771914	771914	771914	771914	771914	771914	CUSHION	1
20-15	709305	709305	709305	709305	709305	709305	CAP	1
20-16	682262	682262	682262	682262	682262	682262	BOLT	4
21	682265	682265	682265	682265	682265	682265	BOLT	6
22	684320	684320	684320	684320	684320	684320	BALL VALVE	1
24	771056	771056	771056	771056	771056	771056	GASKET	1
25	804697	804697	804697	804697	804697	804697	SILENCER	1
26	611148	611148	611148	611148	611148	611148	BOLT	4
27	682276	682276	682276	682276	682276	682276	NUT WITH FLANGE	4
28	709157	709157	709157	709157	709157	709157	PUMP BASE	2
29	770551	770551	770551	770551	770551	770551	CUSHION	4
KIT	K225-AM						AIR MOTOR	

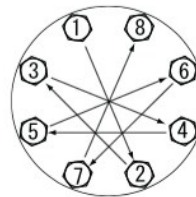
Not Shown: Hose Assembly & Fittings - contact the Yamada factory.

General Tools:

- Socket wrench - 10mm, 12mm, 13mm, 17mm, 22mm
- Hexagonal box wrench - 5mm
- Open-end wrench - 22mm

Miscellaneous:

- Nuts - M14 x 1.5
- Urea grease grade (NLGI) No. 2, Shell Alvania Grease S1 for Center Rod (Ref# 16)
- Lubricants equivalent to (Loctite Anti-Seize 767)



[CLICK HERE FOR TORQUE](#)



[CLICK HERE FOR MAINTENANCE MANUAL](#)

Customer Notes

Model #: \_\_\_\_\_  
 Description: \_\_\_\_\_  
 Serial #: \_\_\_\_\_  
 Date Installed: \_\_\_\_\_  
 Department Location: \_\_\_\_\_  
 Tag/Project: \_\_\_\_\_