

# EXPLODED VIEW & PARTS LISTING

## Air Operated Double Diaphragm Pump

Model: NDP-20BAN-1S

Model# 853653



### To Purchase:

☎ 800-990-7867

✉ sales@yamadapump.com

📍 Find My Rep

### More Information:

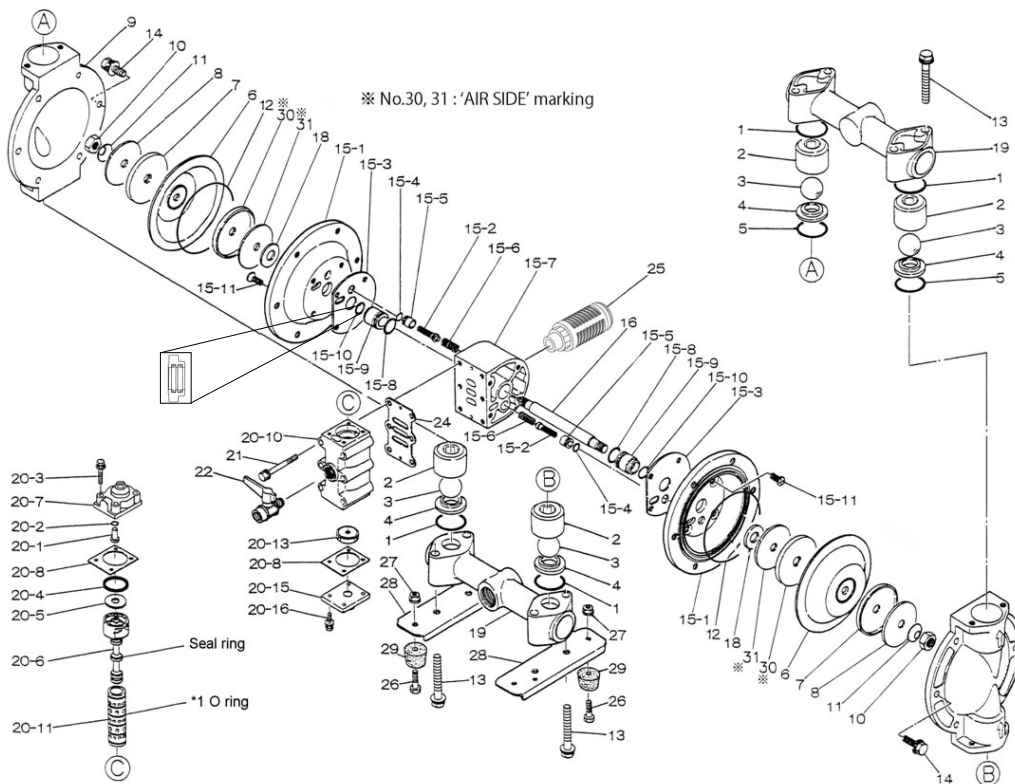
▶ YouTube: @yamadapump

🌐 yamadapump.com

Data Sheets | CAD Drawings | Manuals  
Literature | BOM | Performance Curves

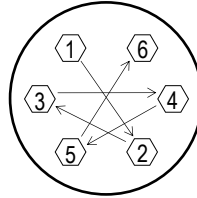
Note: starting serial # 487505

### Trial Program



Air Operated Double Diaphragm Pump

REF. No.	PART No.	DESCRIPTION	QTY	REORDER
1	640036	O RING	4	
2	711700	BALL GUIDE 20AL	4	
3	770720	BALL 20N	4	
4	590086	VALVE SEAT 20 AL	4	
5	640132	O RING	2	
6	772958	DIAPHRAGM	2	
7	709153	CENTER DISK 20R	2	
8	709152	WASHER 20R	2	
9	711686	OUT CHAMBER 20AL	2	
10	682263	NUT SS	2	
11	682730	CONED DISK SPRING M14	2	
13	682264	BOLT	8	
14	682724	BOLT	12	
15	804878	BODY ASSY	1	
15- 1	715937	AIR CHAMBER	2	
15- 2	802360	PILOT VALVE ASSY 20/25	2	
15- 3	771057	GASKET 20/25	2	
15- 4	640009	O RING	2	
15- 5	771945	PILOT VALVE SEAT 20/25	2	
15- 6	708666	SPRING 20/25	2	
15- 7	709812	BODY 20/25	1	
15- 8	685276	O RING	2	
15- 9	780324	THROAT BEARING	2	
15-10	685414	V-PACKING	2	
15-11	682486	BOLT FLAT HD W/ WASHER	8	
16	709163	CENTER ROD 20	1	
18	771054	CUSHION 20/25	2	
19	832529	MANIFOLD 20AL-1S	2	
20	802362	VALVE ASSY	1	
20- 1	709161	RESET BUTTON 20/25	1	
20- 2	640005	O RING	1	
20- 3	682704	BOLT M6 FT ZINC W/ WAS	4	
20- 4	771241	PACKING 20/25	1	
20- 5	715961	WASHER	1	
20- 6	802400	C SPOOL ASSY	1	
20- 6 seal	771053	SEAL RING	5	
20- 7	710221	CAP A 20/25 METAL	1	
20- 8	771240	GASKET 20/25	2	
20-10	711639	VALVE BODY 20/25 METAL	1	
20-11	803931	SLEEVE ASSY	1	
20-11-*1	771080	O-RING	6	
20-13	771914	CUSHION 20/25	1	
20-15	709305	CAP B 20/25 METAL	1	
20-16	682262	BOLT M6 FT ZINC W/ WASHER	4	
21	682265	BOLT M8 PT ZINC W/ WASHER	6	
22	686968	BALL VALVE 20 NEW	1	
24	771056	GASKET 20/25	1	
25	804697	MUFFLER	1	
26	611148	BOLT	4	
27	682276	NUT W/ FLANGE	4	
28	709157	BASE 20 METAL	2	
29	770551	FOOT RUBBER	4	
30	716225	CENTER DISK	2	
31	716226	WASHER	2	
KIT	K20-MN-1	LIQUID END		
KIT	K225-AM	AIR MOTOR		



**Tightening torque for center rod and out chambers.**

- Center Rod 29 ft-lbf {40 N-m}
- Out Chambers C/N/E/V 8 ft-lbf {10 N-m}
- Out Chambers H/S 10 ft-lbf {13 N-m}

**Tightening torque for manifold retainer bolts.**  
BAN-1S 8 ft-lbf {10 N-m}

**General Tools:**

- Socket wrenches - 10mm, 12mm, 13mm, 17mm, 22mm
- Hexagonal box wrench - 5mm
- Open-end wrenches - 22mm

**Special Tool (sold separately):**

- Sleeve remover (713148)

**Miscellaneous:**

- Assembly Oil - turbine oil class 1 - no additives (equivalent to ISO VG32 grade)
- Nuts - M14 x 1.5
- Urea grease grade (NLGI) No. 2
- Lubricants equivalent to (Loctite Anti-Seize 767)

**Customer Notes**

Model #: \_\_\_\_\_

Description: \_\_\_\_\_

Serial #: \_\_\_\_\_

Date Installed: \_\_\_\_\_

Department Location: \_\_\_\_\_

Tag/Project: \_\_\_\_\_